

MPS Catalog Number:

S1 90 80 054 MA AL 035

Date:

01/24/2014

END FITTINGS

Tower End Fitting:

Eye (Forged Steel)

Line End Fitting:

Ball (Forged Steel) (ANSI 52-5)

MATERIAL

Corona Ring (Tower):

None

Corona Ring (Line):

8" Corona Ring

Corona Rings are recommended for applications of 230 kV and above

Number of Sheds:

17 large 18 standard

Rod Diameter:

16 mm

Weight Estimate:

13.3 lbs 6.1 kg

DIMENSIONAL VALUES

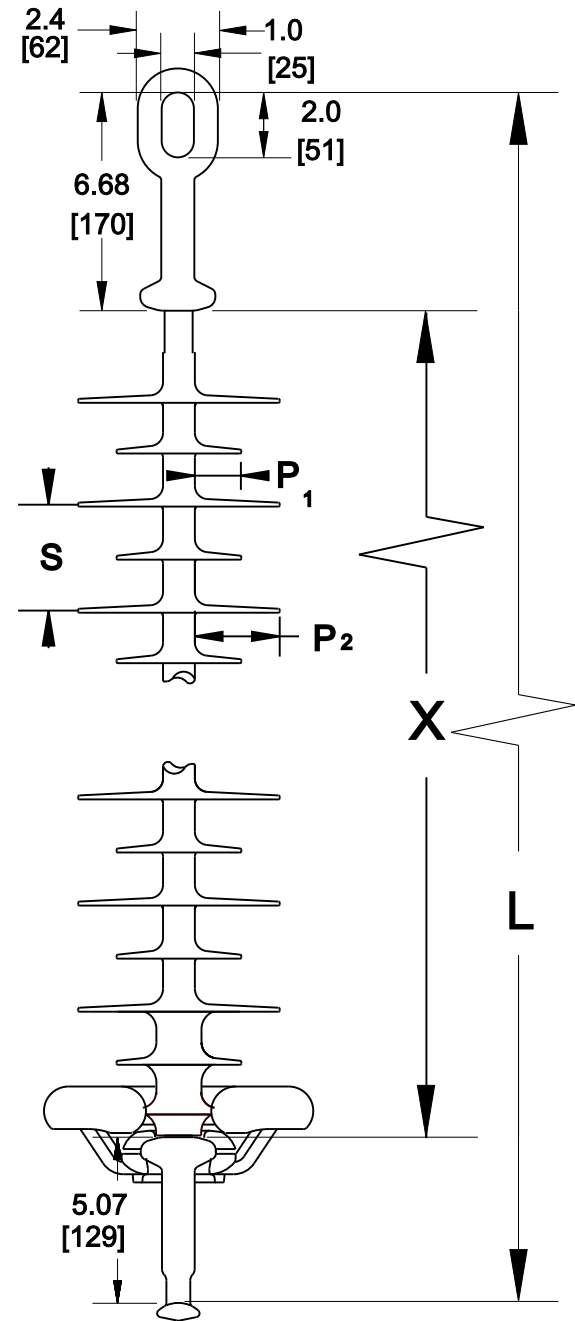
Section Length (L):	66.2 in	1,681 mm
Rubber Length (X):	54.4 in	1,382 mm
Standard Shed Height (P1):	1.5 in	38 mm
Large Shed Height (P2):	2 in	51 mm
Projection Ratio (S/P):	-	1.5
Shed Spacing (S):	3 in	76 mm
Dry Arc Distance:	54.1 in	1,374 mm
Leakage Distance:	158.4 in	4,023 mm

ELECTRICAL VALUES

60 Hz Dry Flashover:	529 kV	Min. Withstand:	488 kV
60 Hz Wet Flashover:	470 kV	Min. Withstand:	409 kV
Pos. Critical Impulse Flashover:	902 kV	Min. Withstand:	787 kV
Neg. Critical Impulse Flashover:	953 kV	Min. Withstand:	838 kV

MECHANICAL VALUES

Specified Mech. Load (SML):	25,000 lbs	111.2 kN
Routine Test Load (RTL):	12,500 lbs	55.6 kN



This drawing contains confidential information that is property of MacLean Power L.L.C ('MacLean'). Use of MacLean's confidential information without MacLean's express written consent is strictly prohibited and may expose you to legal liability. If you believe that you received this material in error, please destroy it or return it to 'MacLean Power, L.L.C., 7801 Park Place Rd, York, SC, 29745, USA.'

Dimensions: inches [millimeters]

Note: Drawing not actual depiction of insulator appearance

Silicone Rubber Sheath & Sheds
Complies with applicable ANSI and IEC standards.